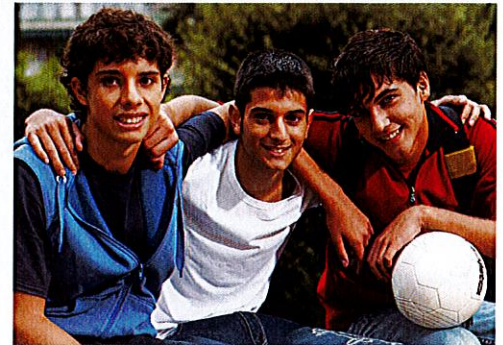
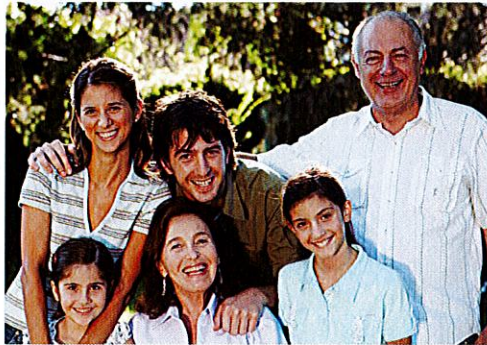


# Outpatient Wellness Clinic



The Outpatient Wellness Clinic provides expert outpatient behavioral healthcare for children, adolescents and adults with mental illnesses. Our services include psychiatric evaluations and assessments, psychotherapy, psychoeducation and medication management.

At the Outpatient Wellness Clinic, we help our patients build a path to recovery by focusing on healing the mind, body and spirit.

The clinic is a part of the continuum of care offered by Adventist HealthCare Shady Grove Medical Center, one of the most comprehensive providers of behavioral health services in the national capital area.

Our treatment team includes compassionate, highly-skilled behavioral health professionals.

We accept most major insurance plans.

## Hours

- Monday–Thursday  
8 a.m. – 6 p.m.
- Friday  
8 a.m. – 3 p.m.

## Location

14915 Broschart Road  
Suite 2200, Rockville, MD 20850

---

We are experienced in treating the following conditions:

- ADHD
  - Anxiety and stress
  - Bipolar disorder
  - Conduct disorders
  - Co-occurring disorders
  - Depression
  - Eating disorders
  - Grieving and loss
  - Obsessive compulsive disorder
  - Personality disorders
  - Post-traumatic stress disorder
  - Schizophrenia
- 

AdventistSGMC.com

301-838-4912

# Family Support Group



**Adventist HealthCare Shady Grove Medical Center invites you to join a free, monthly family support group. The support group offers an opportunity to connect with others who have loved ones experiencing a mental health disorder.**

The support group provides a safe and therapeutic environment where family members can share their experiences, encourage each other and learn how to support their loved ones.

The group will be facilitated by an Adventist HealthCare Shady Grove Medical Center clinician and other special guests.

If a loved one is struggling with mental illness, we are here to help. Sign up today to join our monthly support group.

## **When?**

**Every third Thursday  
each month**

**5 – 6 p.m.**

## **Where?**

**Center for Professional  
Development**

*1st Floor*

**14915 Broschart Road  
Rockville, MD 20850**

To sign up or for more information, please call 301-251-4545.



**Adventist HealthCare**